

Start date 21SEP07
 Finish date 08JUN09
 Data date 19DEC07
 Run date 21MAR08
 Page number 1A

City of New Baltimore Wastewater Treatment Plant & Collection System Construction Schedule - Rev. 1.2

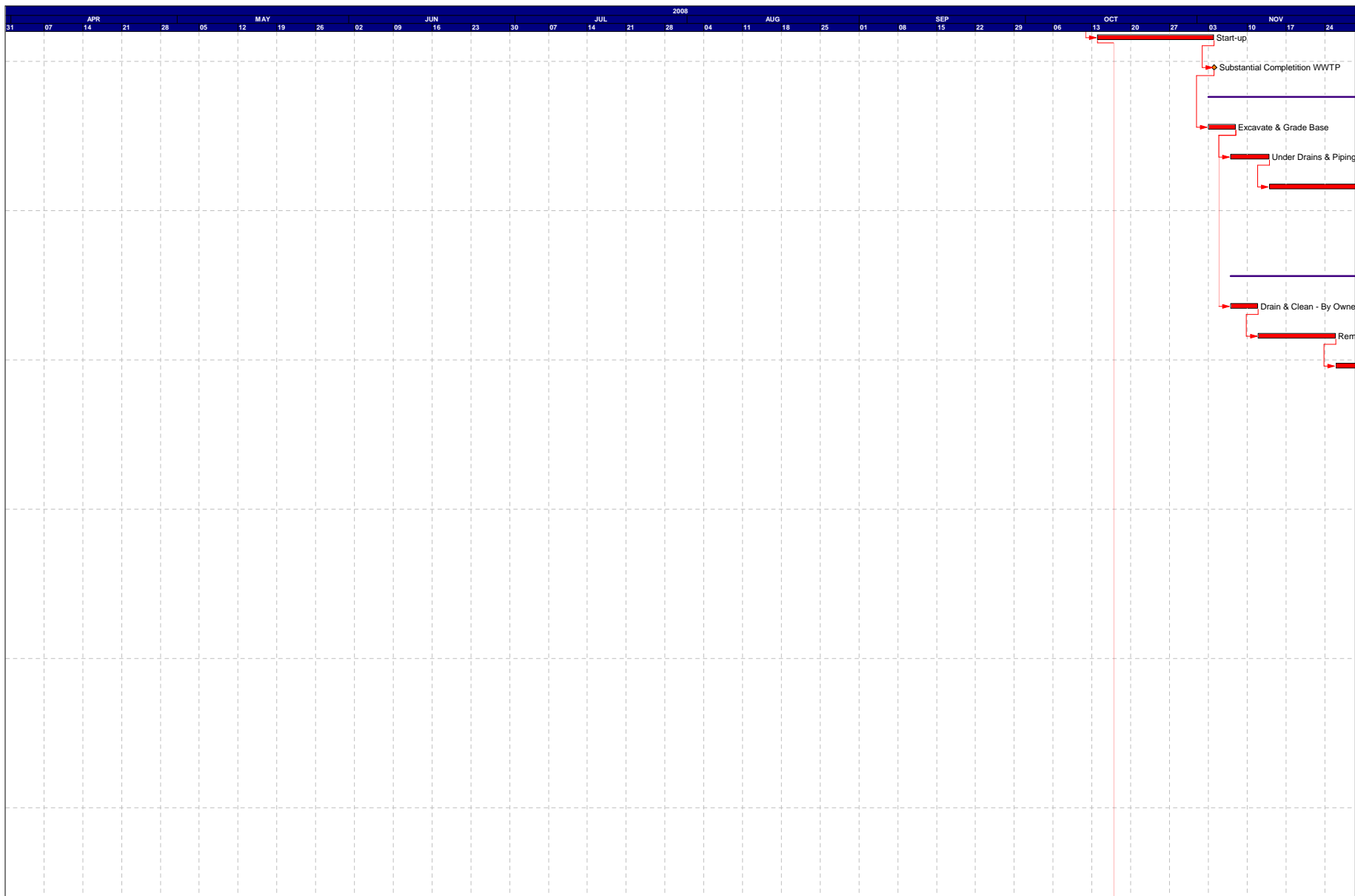
- Early bar
- ▲ Target start point
- ▼ Target finish point
- Target bar
- Progress bar
- Critical bar
- Summary bar
- ◆ Start milestone point
- ◆ Finish milestone point

| Activity ID | Description | Orig Dur | Early Start | Early Finish | % | 2007 | | | | | | | | | | | | 2008 | | | | | | | | | | | |
|-------------|---|-------------|----------------|----------------|----------|------|----|----|-----|----|----|-----|----|----|-----|----|----|------|----|----|-----|----|----|----|----|----|--|--|--|
| | | | | | | NOV | | | DEC | | | JAN | | | FEB | | | MAR | | | APR | | | | | | | | |
| | | | | | | 05 | 12 | 19 | 26 | 03 | 10 | 17 | 24 | 31 | 07 | 14 | 21 | 28 | 04 | 11 | 18 | 25 | 03 | 10 | 17 | 24 | | | |
| 8140 | Start-up | 15 | 14OCT08 | 03NOV08 | 0 | | | | | | | | | | | | | | | | | | | | | | | | |
| 8160 | Substantial Completion WWTP | 0 | | 03NOV08 | 0 | | | | | | | | | | | | | | | | | | | | | | | | |
| 9000 | Equalization Tank | 60 * | 03NOV08 | 28JAN09 | 0 | | | | | | | | | | | | | | | | | | | | | | | | |
| 9010 | Excavate & Grade Base | 10 | 03NOV08 | 07NOV08 | 0 | | | | | | | | | | | | | | | | | | | | | | | | |
| 9020 | Under Drains & Piping | 5 | 07NOV08 | 13NOV08 | 0 | | | | | | | | | | | | | | | | | | | | | | | | |
| 9030 | Form & Pour Foundations | 12 | 14NOV08 | 01DEC08 | 0 | | | | | | | | | | | | | | | | | | | | | | | | |
| 9040 | Form & Pour Walls | 25 | 02DEC08 | 07JAN09 | 0 | | | | | | | | | | | | | | | | | | | | | | | | |
| 9050 | Install Mechanical Piping | 15 | 08JAN09 | 28JAN09 | 0 | | | | | | | | | | | | | | | | | | | | | | | | |
| 9100 | Existing Secondary Clarifier - North | 26 * | 07NOV08 | 12DEC08 | 0 | | | | | | | | | | | | | | | | | | | | | | | | |
| 9110 | Drain & Clean - By Owner | 3 | 07NOV08 | 11NOV08 | 0 | | | | | | | | | | | | | | | | | | | | | | | | |
| 9120 | Remove Equipment | 10 | 12NOV08 | 25NOV08 | 0 | | | | | | | | | | | | | | | | | | | | | | | | |
| 9130 | Remove Flume/Trough | 8 | 26NOV08 | 05DEC08 | 0 | | | | | | | | | | | | | | | | | | | | | | | | |
| 9140 | Patch Existing Concrete | 5 | 08DEC08 | 12DEC08 | 0 | | | | | | | | | | | | | | | | | | | | | | | | |
| 9150 | Turn Over to Owner | 0 | | 12DEC08 | 0 | | | | | | | | | | | | | | | | | | | | | | | | |
| 9200 | Existing Secondary Clarifier - South | 26 * | 08DEC08 | 14JAN09 | 0 | | | | | | | | | | | | | | | | | | | | | | | | |
| 9210 | Drain & Clean - By Owner | 3 | 08DEC08 | 10DEC08 | 0 | | | | | | | | | | | | | | | | | | | | | | | | |
| 9220 | Remove Equipment | 10 | 11DEC08 | 24DEC08 | 0 | | | | | | | | | | | | | | | | | | | | | | | | |
| 9230 | Remove Flume/Trough | 8 | 26DEC08 | 07JAN09 | 0 | | | | | | | | | | | | | | | | | | | | | | | | |
| 9240 | Patch Existing Concrete | 5 | 08JAN09 | 14JAN09 | 0 | | | | | | | | | | | | | | | | | | | | | | | | |
| 9250 | Turn Over to Owner | 0 | | 14JAN09 | 0 | | | | | | | | | | | | | | | | | | | | | | | | |
| 9300 | Primary Chlorine Tank | 26 * | 08JAN09 | 12FEB09 | 0 | | | | | | | | | | | | | | | | | | | | | | | | |
| 9310 | Drain & Clean - By Owner | 3 | 08JAN09 | 12JAN09 | 0 | | | | | | | | | | | | | | | | | | | | | | | | |
| 9320 | Remove Equipment | 10 | 13JAN09 | 26JAN09 | 0 | | | | | | | | | | | | | | | | | | | | | | | | |
| 9330 | Remove Flume/Trough | 8 | 27JAN09 | 05FEB09 | 0 | | | | | | | | | | | | | | | | | | | | | | | | |
| 9340 | Patch Existing Concrete | 5 | 06FEB09 | 12FEB09 | 0 | | | | | | | | | | | | | | | | | | | | | | | | |
| 9350 | Turn Over to Owner | 0 | | 12FEB09 | 0 | | | | | | | | | | | | | | | | | | | | | | | | |
| 9400 | Existing Headworks Building | 15 * | 06FEB09 | 26FEB09 | 0 | | | | | | | | | | | | | | | | | | | | | | | | |
| 9410 | Disconnect & Remove Electrical | 15 | 06FEB09 | 26FEB09 | 0 | | | | | | | | | | | | | | | | | | | | | | | | |
| 9420 | Disconnect & Remove Mechanical Systems | 15 | 06FEB09 | 26FEB09 | 0 | | | | | | | | | | | | | | | | | | | | | | | | |

Start date 21SEP07
 Finish date 08JUN09
 Data date 19DEC07
 Run date 21MAR08
 Page number 4A

**City of New Baltimore
 Wastewater Treatment Plant & Collection System
 Construction Schedule - Rev. 1.2**

- Early bar
- ▲ Target start point
- ▼ Target finish point
- Target bar
- Progress bar
- Critical bar
- Summary bar
- ◆ Start milestone point
- ◆ Finish milestone point



Start date 21SEP07
 Finish date 08JUN09
 Data date 19DEC07
 Run date 21MAR08
 Page number 4B

City of New Baltimore Wastewater Treatment Plant & Collection System

Construction Schedule - Rev. 1.2

- Early bar
- ▲ Target start point
- ▼ Target finish point
- Target bar
- Progress bar
- Critical bar
- Summary bar
- ◆ Start milestone point
- ◆ Finish milestone point

